

Sorting and Filtering Data

IN THIS CHAPTER

- Sorting *page 332*
- Filtering *page 337*

Sorting

You can sort data in your spreadsheets pretty much anyway you want: by one or more columns, ascending or descending, or even by specific sort orders you set up yourself.

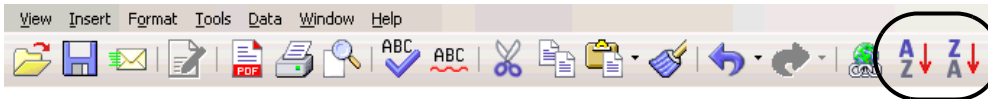
	A	B	C	D	E	F	G
1	Firstname	Lastname	Address	City	State	Postcode	Years of Service
2	Simon	Johnson	12 Main St	Fargo	ND	56567	17
3	Kyle	Hansen	1012 2nd Ave	Fargo	ND	56567	1
4	Simon	Neville	999 1st Avenue	Fargo	ND	56567	12
5	Doug						
6	Jane						
7	Dan						
8	Larry						
9	Dena						
10	Arnold						
11	Stan						
12	Jeff						
13	Kristen						
14	Allan						
15	Mark						
16	Don						
17	Tracy						
18	Beth						

Quick Sort

- 1 Select all the data you want to sort. This will sort data only by the first column, but you need to select all the columns to be sure the data stays together correctly.

B	C
Wagg	Kris
Haugen	Sylvia
Fishburn	Larry
Bates	Bert

- 2 Click the A-Z or Z-A quicksort icon.



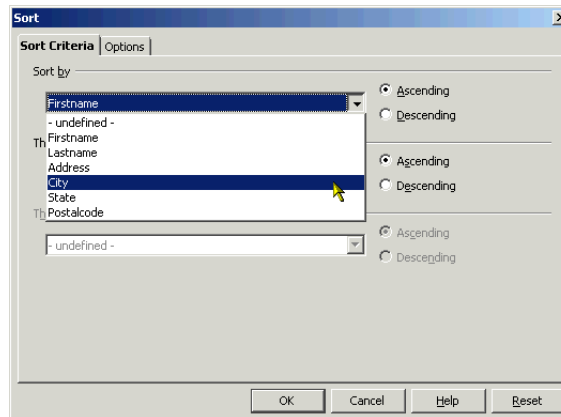
- 3 The data will be sorted.

B	C
Bates	Bert
Fishburn	Larry
Haugen	Sylvia
Wagg	Kris

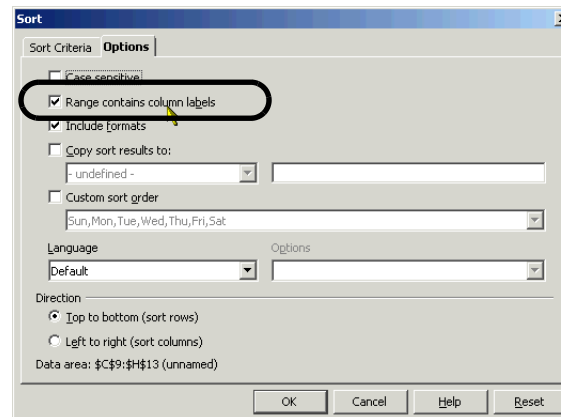
Sorting Using the Sort Window

Here's the best way to sort basic data. Let's say you've got a big list of names and you'd just like to see them in alphabetical order so it's easier to use.

- 1 Select all the data you want to sort, *including the headings*. This will make it easier to specify which columns to sort by. Select just the data to sort, not the whole sheet.
- 2 Choose Data > Sort.
- 3 In the Sort window, select the column to sort by, and whether you want to sort in Ascending (A to Z or 1 to 10) or Descending order.



- 4 Click the Options tab and mark the **Range Contains Column Labels** option.



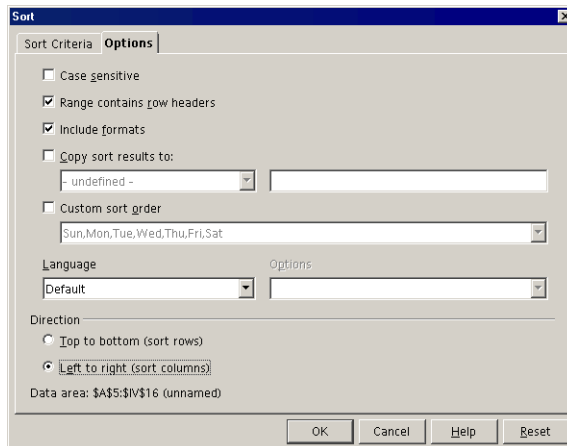
- 5 Click OK.

Sorting Left to Right

Sometimes the categories you want to sort by are on the vertical axis, in rows, as in this example. The sorting process is similar to the standard top-to-bottom approach; you just need to specify that you're sorting left to right instead of top to bottom.

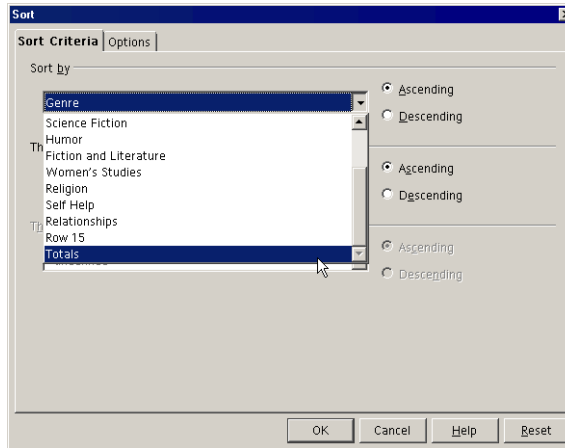
- 1 Select the data you want to sort, including the headings.
- 2 Choose Data > Sort.
- 3 In the Sort window, click the Options tab.
- 4 Select the options shown: select Left to Right (Sort Columns) to specify left-to-right sorting, and also mark the Range Contains Row Headers option to indicate that the first column of data is headers, not data to be sorted.

	A	B	C	D	E
1	2002 Working Knowledge Salespeople Sales Figures				
2					
3	<i>Broken down by genre</i>				
4					
5	Genre	Gutenberg	Hanson	Lundsværk	Martin
6	Romance	\$1,952.00	\$9,877.00	\$2,950.00	\$2,900.00
7	History	\$223.00	\$889.00	\$2,990.00	\$900.00
8	Science Fiction	\$2,004.00	\$8,990.00	\$4,094.00	\$5,500.00
9	Humor	\$2,005.00	\$5,899.00	\$4,022.00	\$6,778.00
10	Fiction and Literature	\$45,566.00	\$8,990.00	\$6,678.00	\$1,344.00
11	Women's Studies	\$2,448.00	\$24,467.00	\$2,611.00	\$56,678.00
12	Religion	\$120.00	\$399.00	\$1,122.00	\$1,240.00
13	Self Help	\$2,955.00	\$6,793.00	\$6,688.00	\$7,655.00
14	Relationships	\$5,667.00	\$5,388.00	\$9,844.00	\$8,002.00
15					
16	Totals	\$62,340.00	\$65,192.00	\$41,039.00	\$90,997.00



- 5 Click the Sort Criteria tab.

- 6 Select the normal sort options; the row to sort by and Ascending or Descending.



- 7 Click OK.
- 8 The data will be sorted from least to greatest (ascending) total sales.

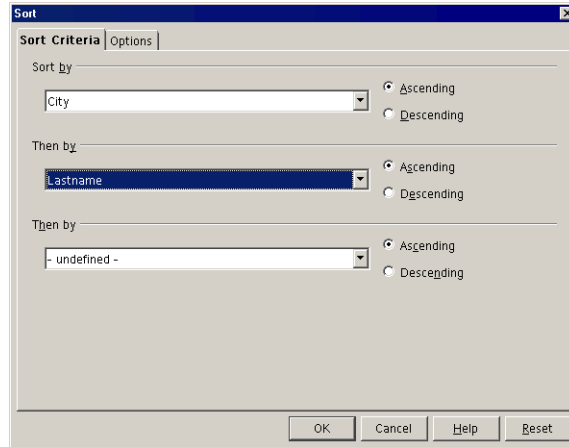
	A	B	C	D	E
1	2002 Working Knowledge Salespeople Sales Figures				
2					
3	<i>Broken down by genre</i>				
4					
5	Genre	Lundsverk	Gutenberg	Hanson	Martin
6	Romance	\$2,990.00	\$1,352.00	\$3,377.00	\$2,900.00
7	History	\$2,990.00	\$223.00	\$889.00	\$900.00
8	Science Fiction				
9	Humor	\$4,094.00	\$2,004.00	\$8,990.00	\$5,500.00
10	Fiction and Literature	\$4,022.00	\$2,005.00	\$5,899.00	\$6,778.00
11	Women's Studies	\$6,678.00	\$45,566.00	\$8,990.00	\$1,344.00
12	Religion	\$2,611.00	\$2,448.00	\$24,467.00	\$56,678.00
13	Self Help	\$1,122.00	\$120.00	\$399.00	\$1,240.00
14	Relationships	\$6,688.00	\$2,955.00	\$6,793.00	\$7,655.00
15					
16	Totals	\$41,039.00	\$62,340.00	\$65,192.00	\$90,997.00

Sorting Using Two or More Columns as Criteria

Sometimes you need to sort by two or more columns to get the data in the order you need. If you have, for instance, 5000 names of the people in your company, with three locations, you probably want to sort the employees first by location. However, then you have at least 1000 people at each location, in no particular order. To make the data easier to read, sort first by the location, and then by last name.

- 1 Select the data including headings.
- 2 Choose Data > Sort.

- 3 In the Sort Criteria tab, select to sort by up to three columns.

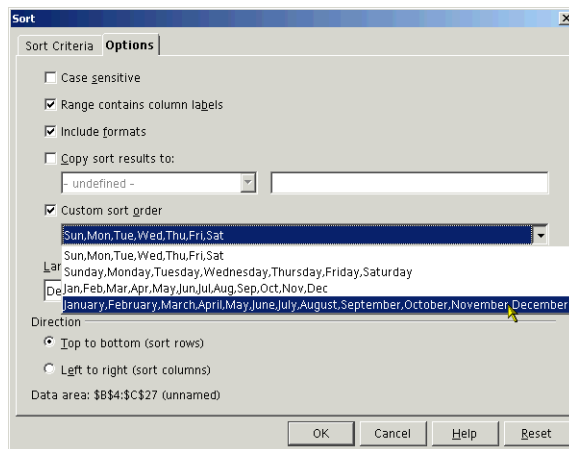


- 4 Click the Options tab and make sure the Range Contains Column Labels is marked.
5 Click OK. The data will appear sorted as you specified.

Sorting Using Months and Weeks

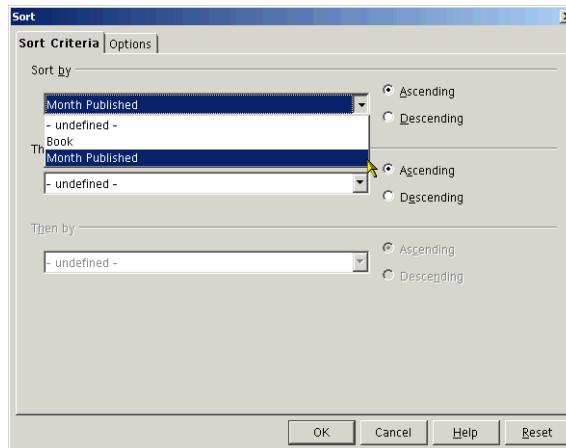
You can sort alphabetically or by numbers but you can also sort based on other things that have a particular order like the days of the week or months.

- 1 Select the data including headings.
- 2 Choose Data > Sort.
- 3 Click the Options tab; you'll see the option to sort by other information.
- 4 Select the Custom Sort Order to use.



- 5 Select the Range Contains Column Labels option.

- Click the Sort Criteria tab and choose to sort by the column containing data corresponding to the sort you chose in the other tab.



- Click OK.

Creating Your Own Sort Order

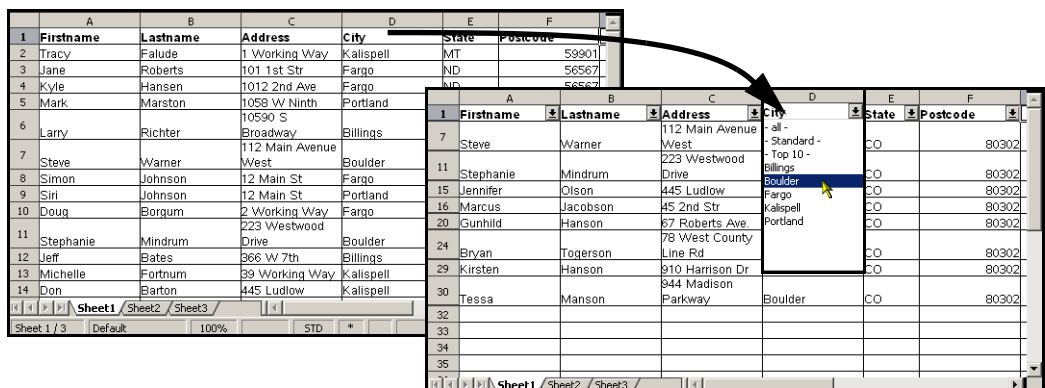
You can automatically sort by month or day of the week because OpenOffice.org comes with these custom sort orders already set up. You can set up similar sort orders that contain whatever you want. To create your own sort order, see *Quickly Entering Months, Days, or Anything You Want With Sort Lists* on page 277.

Filtering

There are a couple ways to do filter out data so that you see only what you want: a quick simple autofilter that's often good enough as is, and the filter you can define the way you want.

Using the AutoFilter

Here's what the autofilter looks like.

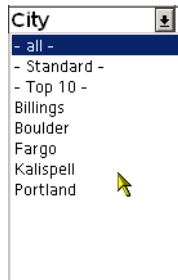


Let's say that you've got an enormous list of people in a spreadsheet, and you just want to see the ones from a particular town. That's a good example of when to use the autofilter. Autofilter lets you pick one value for a column, like "Boulder" for the City column, and view the rows in that spreadsheet with "Boulder" in the City column.

- 1 Choose Data > AutoFilter.
- 2 Dropdown arrows will appear at the top of each column. This means you can restrict what you see in the spreadsheet to rows with a particular value.

	A	B	C	D	E	F
1	Firstname	Lastname	Address	City	State	Postcode
2	Jane	Roberts	101 1st Str	Fargo	ND	56567
3	Mark	Crowe	90122 105th Avenue	Kalispell	MT	59901
4	Stan	Marston	1058 W Ninth	Billings	MT	57788
5	Kathy	Hanson	910 Harrison Dr	Portland	OR	90033
6	Bryan	Togerson	78 West County Line Rd	Boulder	CO	80302
7	Simon	Johnson	12 Main St	Fargo	ND	56567
8	Don	Barton	445 Ludlow	Kalispell	MT	59901
9	Jeff	Bates	366 W 7th	Billings	MT	57788
10	Jenna	Curlioner	88 E 105th	Portland	OR	90033
			944 Madison			

- 3 Click and hold down the arrow and select a value.



- 4 The spreadsheet will filter out everyone except the rows with that value.

	A	B	C	D	E	F
1	Firstname	Lastname	Address	City	State	Postcode
3	Mark	Crowe	90122 105th Avenue	Kalispell	MT	59901
8	Don	Barton	445 Ludlow	Kalispell	MT	59901
19	Beth	Jerlin	455 Reserve Drive	Kalispell	MT	59901
27	Michelle	Fortnum	39 Working Way	Kalispell	MT	59901
29	Tracy	Falude	1 Working Way	Kalispell	MT	59901

- 5 To go back to showing all, click and hold down on the column's arrow (blue now) and choose All.
- 6 When you're done, choose Data > Filter > AutoFilter again to turn off the filter.

Note – If you leave an autofilter selection like just Kalispell within the State column, then make another selection in another column like Last Name or State, you'll see only records for items that meet **all** the criteria. This means you'll see far fewer records than you want, typically.

Creating a Standard Filter

The autofilter works great for some situations, but sometimes you want something a little more complicated. With the autofilter you can just select one value for a column (or the top 10). What if you wanted to just show records for a value that is above a particular level; say, all the invoices for \$100 or more? Or you need to view all the records for invoices you've submitted to Frye's, Best Buy, or Circuit City. You can't do that with the autofilter, so it's time to create your own filter.

Let's say you're still working with the same spreadsheet as before. You need to narrow down your spreadsheet to people who are from Boulder *or* from Kalispell, *and* who have been with the organization at least five years.

- 1 Select all the cells containing data, including the headings.
- 2 Choose Data > Filter > Standard Filter.
- 3 The Standard Filter window will appear.
- 4 Fill in the first row with your first criteria, listing the column, the operator (equal to, greater than, etc.), and the amount to compare values to.

Operator	Field name	Condition	Value
	Years of Service	>=	5
	- none -	=	
	- none -	=	

This condition says "Show me all the records for people who have five or more years of service."

- 5 Enter additional filters, if necessary. Select And or Or, depending on whether they are combined or independent.

Operator	Field name	Condition	Value
	Years of Service	>=	5
AND	City	=	Boulder
OR	City	=	Kalispell

These conditions now say "Show me all the people who've been here five years or more, **and** who are from **either** Kalispell or Boulder."

- 6 Click OK. The data meeting the criteria will appear in your spreadsheet.
- 7 To remove the filter, choose Data > Filter > Remove Filter.